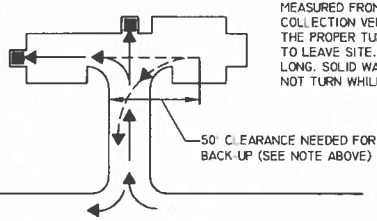
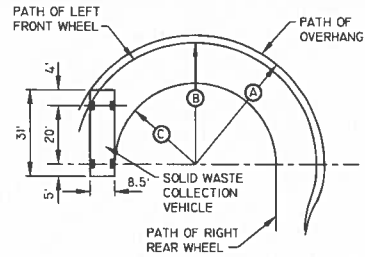


PLEASE NOTE
SOLID WASTE VEHICLES WEIGH APPROX. 29 TONS WHEN FULL. DRIVEWAYS MUST BE BUILT TO SUPPORT THIS WEIGHT WITHOUT DAMAGE TO DRIVE.

HAMMER HEAD DRIVE



SAFETY NOTE
BACKING UP MORE THAN 50' AFTER SERVICE TO A SOLID WASTE BIN IS PROHIBITED. THE 50' IS MEASURED FROM THE BACK OF THE SOLID WASTE COLLECTION VEHICLE. MAKE SURE THE AREA HAS THE PROPER TURNING RADII AND ACCESS AREA TO LEAVE SITE. THE VEHICLE IS APPROX. 36' LONG. SOLID WASTE COLLECTION VEHICLES WILL NOT TURN WHILE BACKING.



- (A) 4.4' MIN. TURNING RADIUS
- (B) 4.5'-2" TURNING RADIUS
- (C) 29'-3" TURNING RADIUS

CLEARANCE REQUIREMENTS

NOTES

1. ALL CURBS ARE TO BE ALIGNED ON THE OUTSIDE OF ENCLOSURE WALLS. THE CURBS SHALL NOT INTERFERE WITH THE ROUTE OF THE SOLID WASTE COLLECTION VEHICLE.
2. IN GENERAL TERMS, ALL SOLID WASTE COLLECTION ROUTES SHALL MEET ENGINEERING DESIGN CRITERIA (STREET WIDTHS, TURNING RADII) IN A MANNER THAT ALLOWS SOLID WASTE COLLECTION VEHICLES ACCESS TO BIN ENCLOSURES. SITES SHALL BE DESIGNED SO COLLECTION VEHICLES CAN SAFELY ACCESS AND LIFT A BIN WITHOUT OBSTRUCTIONS (GROUND LEVEL AND AERIAL OBSTRUCTIONS).
3. FOR THE SAFETY OF OTHERS, SOLID WASTE COLLECTION VEHICLES WILL NOT BACK UP MORE THAN 50 FEET AFTER SERVICING A BIN AND WILL NOT MAKE ANY TURNS WHILE BACKING.
4. NO AWNINGS OR BUILDING PROJECTIONS ALLOWED IN SOLID WASTE COLLECTION VEHICLE ROUTES. MIN. OVERHEAD CLEARANCE OF 14' IS REQUIRED IN DRIVE AND 25' OVER BIN ENCLOSURE AREA FROM STEEL SAFETY POSTS BACK 50'.
5. ROUTES SHALL BE CLEAR OF ALL OBSTRUCTIONS (CURBS, WALLS, OVERHEAD WIRES, AND AWNINGS) TO PREVENT DAMAGE FROM THE COLLECTION VEHICLE.
6. TAKE NOTE OF THE SOLID WASTE COLLECTION ROUTE. THE COLLECTION VEHICLE SHALL TRAVEL THROUGH A SITE ONCE WITHOUT BACKTRACKING.
7. BIN ENCLOSURES ARE TO BE ANGLED NO MORE THAN 30 DEGREES FROM THE CENTER LINE OF THE SOLID WASTE COLLECTION VEHICLE ROUTE.
8. BIN ENCLOSURES SHALL BE LOCATED AWAY FROM ENTRANCES AND EXITS OR BUSINESS DRIVE-THRU'S SO SOLID WASTE COLLECTION VEHICLES DOES NOT CREATE A SAFETY HAZARD BY BLOCKING IN-COMING OR OUT-GOING TRAFFIC.
9. STANDARDS FOR SINGLE, DOUBLE, AND TRIPLE-WIDE BIN ENCLOSURES ARE ADDRESSED IN COM DETAILS M-62.02 AND M-62.03.
10. STANDARDS FOR BIN ENCLOSURE SCREEN WALLS, SAFETY POSTS, AND GATES ARE ADDRESSED IN COM DETAIL M-62.04.

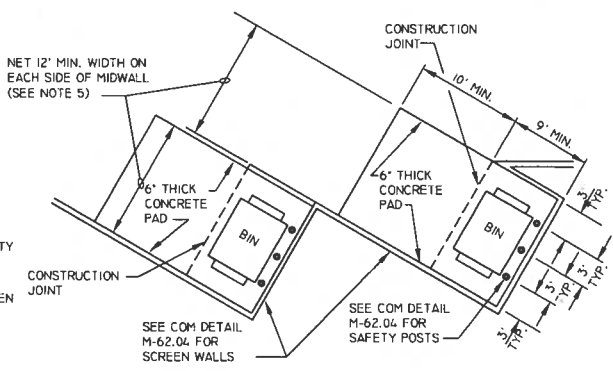
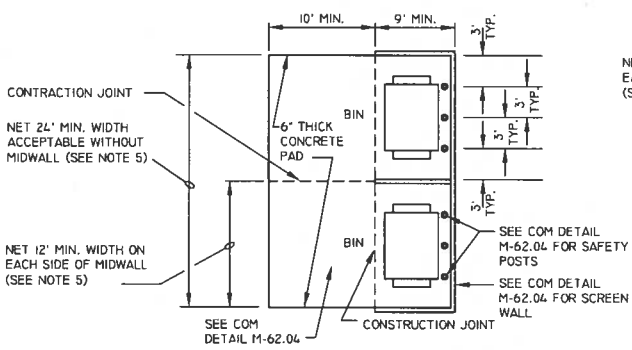
PUBLIC ROADWAY

ROUTE DIRECTION

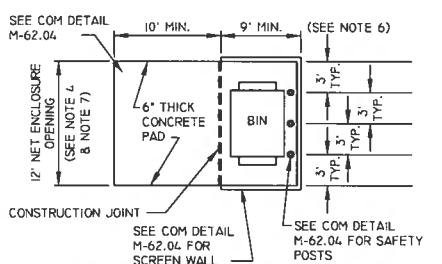
MAX. BIN DEVIATION

50° MAX.

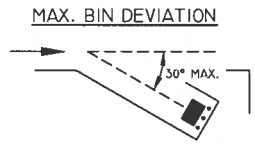
A TYPICAL SOLID WASTE COLLECTION ROUTE



DOUBLE-WIDE BIN ENCLOSURE CONFIGURATIONS



SINGLE-WIDE BIN ENCLOSURE CONFIGURATION



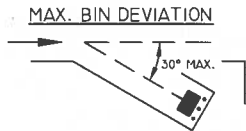
SEE M-62.02.2 FOR REFERENCED NOTES

NOT TO SCALE

NOTES

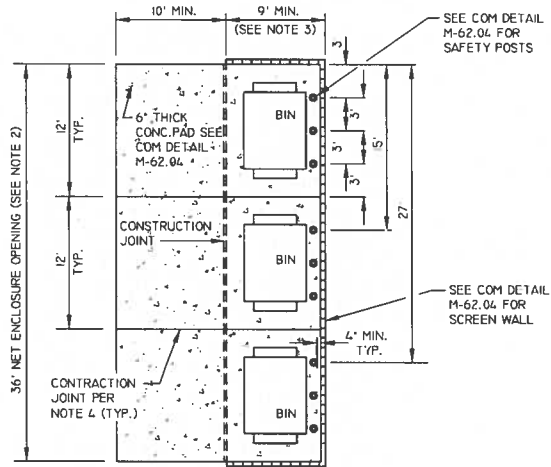
1. ALL COMMERCIAL PROPERTIES SHALL BE DESIGNED WITH ENCLOSURES TO ACCOMMODATE (I) REFUSE AND (I) RECYCLING ENCLOSURE FOR EVERY 20,000 SQUARE FEET OF BUILDING SPACE. RESTAURANTS WHICH ARE DESIGNED ON A SINGLE PAD SHALL HAVE A MINIMUM (I) REFUSE AND (I) RECYCLING ENCLOSURE. THE ENCLOSURES CAN BE SET UP AS DOUBLES OR SINGLES TO MAXIMIZE THE USE OF THE PROPERTY.
2. MULTI-UNIT RESIDENTIAL DEVELOPMENTS SHALL BE DESIGNED WITH EITHER SINGLE OR DOUBLE-WIDE ENCLOSURES FOR TRASH AND AT LEAST ONE TRIPLE-WIDE ENCLOSURE FOR RECYCLING.
3. COMPACTORS CAN BE USED IN DEVELOPMENTS WHERE THE EMPLOYEES LOAD AND ACTIVATE THE COMPACTING EQUIPMENT. DEVELOPMENTS THAT ALLOW CUSTOMERS OR RESIDENTS ACCESS TO THE COMPACTING EQUIPMENT WILL NOT BE APPROVED. MARICOPA COUNTY REGULATIONS (MARICOPA COUNTY ENVIRONMENTAL HEALTH CODE CHAPTER 2, SECTION 5, REGULATION 4 (A)) REQUIRE TWICE PER WEEK COLLECTION IF FOOD WASTE IS PLACED INTO CONTAINERS.
4. THE NUMBER OF BIN ENCLOSURES NEEDED DEPENDS ON THE SIZE OF THE DEVELOPMENT. TYPICALLY, TOTAL VOLUME NEEDS CAN BE CALCULATED BASED ON ONE HALF-CUBIC YARD PER LIVING UNIT PER WEEK. FOR EXAMPLE, A DEVELOPMENT WITH 210 UNITS X .5 YARDS = 105 YARDS PER WEEK OR 10 TRASH BINS (6 YARD) SERVICED TWO TIMES PER WEEK (10 X 6 X 2 = 120 YARDS).
5. SINGLE-WIDE BIN ENCLOSURES SHALL HAVE A NET ENCLOSURE OPENING OF 12 FEET.
6. DOUBLE-WIDE BIN ENCLOSURES SHALL HAVE A NET ENCLOSURE OPENING OF 24 FEET WITHOUT MIDWALLS. ALTHOUGH NOT PREFERRED, DOUBLE WIDE BIN ENCLOSURES CAN BE DESIGNED WITH MIDWALLS WITH A NET ENCLOSURE OPENING OF 12 FEET ON EACH SIDE OF MIDWALL.
7. GATES, HINGES, SAFETY POSTS, & MOUNTING HARDWARE SHALL BE INSTALLED SO THERE IS A MIN. 9 FOOT DEPTH CREATED WITHIN EACH ENCLOSURE.
8. GATES, HINGES, AND MOUNTING HARDWARE SHALL NOT INTRUDE UPON MINIMUM NET ENCLOSURE OPENING SO THERE IS A MINIMUM 12" WIDTH WITHIN EACH ENCLOSURE.
9. BIN ENCLOSURES ARE TO BE ANGLED NO MORE THAN 30 DEGREES FROM THE CENTER LINE OF THE SOLID WASTE COLLECTION VEHICLE ROUTE.
10. BINS THAT ARE VISIBLE FROM A PUBLIC ROADWAY SHALL HAVE ENCLOSURE GATES THAT SCREEN THE BINS FROM PUBLIC VIEW.
11. BIN ENCLOSURES TO BE A MINIMUM OF 3 FEET FROM ANY NON-COMBUSTIBLE PLANNED OR EXISTING STRUCTURE AT ITS CLOSEST POINT; 5 FEET FROM ANY COMBUSTIBLE PLANNED OR EXISTING STRUCTURE AT ITS CLOSEST POINT (PER UNIFORM FIRE CODE 1103.2.2).
12. STANDARDS FOR SOLID WASTE VEHICLE ACCESS ARE ADDRESSED IN COM DETAIL M-62.01.
13. STANDARDS FOR TRIPLE WIDE ENCLOSURES ARE ADDRESSED IN COM DETAIL M-62.03.
14. STANDARDS FOR BIN ENCLOSURE SCREEN WALLS, SAFETY POSTS, AND GATES ARE ADDRESSED IN COM DETAIL M-62.04.
15. STANDARDS FOR PROPERTIES APPROVED FOR BARREL SERVICE ARE ADDRESSED IN COM DETAIL M-62.05.
16. RESTAURANTS MUST PROVIDE A SEPARATE ENCLOSED AREA TO ACCOMMODATE THEIR GREASE TRAP. THIS DESIGNATED AREA MUST NOT INTERFERE WITH THE TRASH/RECYCLING COLLECTION.
17. SOLID WASTE ENCLOSURES MAY INCLUDE WATER CONNECTIONS & DRAINS TO FACILITATE CLEANING OF DUMPSTERS. THESE SHOULD BE LOCATED TO NOT IMPEDE THE ENCLOSURE OPENING (AND GATING IF REQUIRED). ADDITIONAL ITEMS SUCH AS LANDSCAPING CONTROL BOXES AND LIGHTING MAY BE POSITIONED ON THE OUTSIDE OF THE ENCLOSURE WALLS.
18. TREE PLANTING SHOULD NOT TAKE PLACE WITHIN TEN (10) FEET OF THE BIN ENCLOSURE AND SHOULD BE SPACED SO AS NOT TO CREATE AN AERIAL OBSTRUCTION FOR THE BIN DUMPING AT THE FINAL FULL GROWTH DIMENSIONS.





NOTES

1. MULTI-UNIT RESIDENTIAL DEVELOPMENTS MAY BE DESIGNED WITH A TRIPLE-WIDE ENCLOSURE TO ACCOMMODATE RECYCLING. ADDITIONAL ENCLOSURES MAY BE NECESSARY DEPENDING ON NUMBER OF UNITS. TOTAL VOLUME NEEDS ARE ADDRESSED IN COM DETAIL M-62.02.
2. TRIPLE-WIDE ENCLOSURES SHALL HAVE A NET ENCLOSURE OPENING OF 36 FEET AND SHALL BE DESIGNED WITHOUT MIDWALLS. GATES, HINGES, AND MOUNTING HARDWARE SHALL NOT INTRUDE UPON MINIMUM NET ENCLOSURE OPENING.
3. GATES, HINGES, SAFETY POSTS, AND MOUNTING HARDWARE SHALL BE INSTALLED SO THERE IS A MINIMUM 9 FOOT DEPTH CREATED WITHIN EACH ENCLOSURE.
4. BIN ENCLOSURES ARE TO BE ANGLED NO MORE THAN 30 DEGREES FROM THE CENTER LINE OF THE SOLID WASTE COLLECTION VEHICLE ROUTE.
5. CONTRACTION JOINTS MAY BE EITHER SCORED OR SAWCUT 1-INCH DEEP.



TRIPLE-WIDE BIN ENCLOSURE

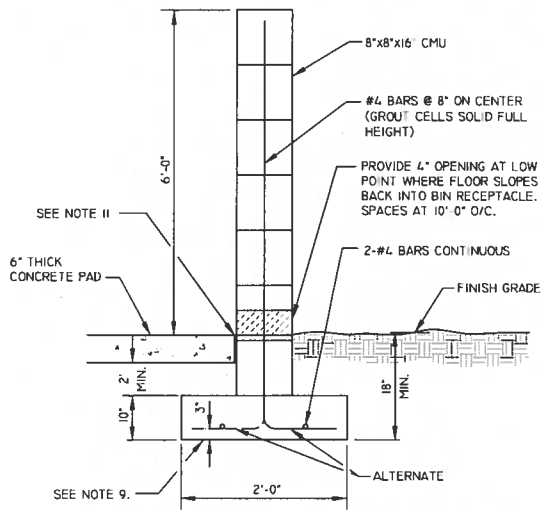


TRIPLE-WIDE BIN ENCLOSURES

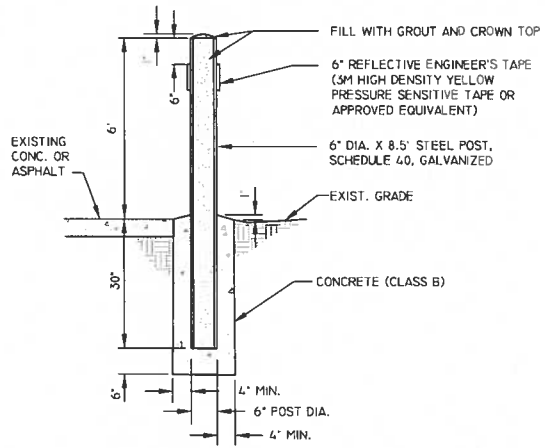
DETAIL NO.
M-62.03

NOT TO SCALE

REV. 01/31/14



6-FOOT MASONRY SCREEN WALL



SAFETY POST

SEE M-62.04.2 FOR REFERENCED NOTES



BIN ENCLOSURE SCREEN WALL, SAFETY POST AND GATE STANDARDS

DETAIL NO.
M-62.04.1

NOT TO SCALE

REV. 01/31/14



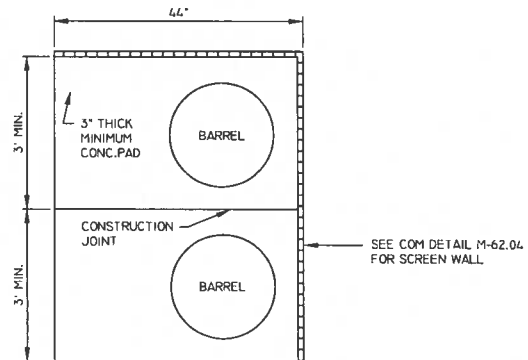
NOTES

1. TRASH AND RECYCLING BIN AREA SHALL BE SCREENED WITH A SIX FOOT (6') MASONRY WALL PER COM DETAIL M-62.04.1.
2. BIN ENCLOSURE TO BE A MINIMUM OF 3 FEET FROM ANY NON-COMBUSTABLE PLANNED OR EXISTING STRUCTURE AT ITS CLOSEST POINT, AND 5 FEET FROM ANY COMBUSTABLE PLANNED OR EXISTING STRUCTURE AT ITS CLOSEST POINT (PER UNIFORM FIRE CODE 1103.2.2).
3. BINS THAT ARE VISIBLE FROM A PUBLIC ROADWAY SHALL HAVE ENCLOSURE GATES THAT SCREEN THE BINS FROM PUBLIC VIEW.
4. GATES SHALL BE INSTALLED SO THERE IS A NET BIN ENCLOSURE OPENING OF 12 FEET PER BIN. GATES, HINGES, AND MOUNTING HARDWARE SHALL NOT INTRUDE UPON MINIMUM NET ENCLOSURE OPENING.
5. GATES, HINGES, SAFETY POSTS, AND MOUNTING HARDWARE SHALL BE INSTALLED SO THERE IS A MINIMUM 9 FOOT DEPTH CREATED WITHIN EACH ENCLOSURE.
6. EACH ENCLOSURE GATE SHALL HAVE DROP PINS INSTALLED AND HOLES DRILLED IN THE CONCRETE AT BOTH THE OPEN AND CLOSED POSITIONS TO PREVENT GATES FROM CLOSING INTO THE COLLECTION VEHICLE.
7. BIN ENCLOSURES SHALL HAVE (3) 6" DIAMETER STEEL SAFETY POSTS INSTALLED IN THE BACK OF THE ENCLOSURE ONLY PER COM DETAIL M-62.04.1.
8. SAFETY POSTS SHALL HAVE A HEIGHT OF 6 FEET OR BE EQUAL TO THE HEIGHT OF THE BACK SCREEN WALL OF THE ENCLOSURE. SAFETY POSTS SHALL BE PLACED A MINIMUM OF 4" FROM THE WALL.
9. USE CLASS "A" CONCRETE AS PER SECTION 725 EXCEPT AS NOTED IN SAFETY POST DETAIL ON COM DETAIL M-62.04.1.
10. STEEL REINFORCEMENT SHALL BE GRADE 40.
11. EXPANSION JOINT FILLER SHALL BE 1/2" BITUMINOUS TYPE PREFORMED EXPANSION JOINT FILLER ASTM D-1751.
12. EXTERIOR FINISH OF 6 FOOT MASONRY SCREEN WALLS SHALL BE COORDINATED ARCHITECTURALLY WITH PRIMARY BUILDING FINISHES.
13. SOIL BELOW THE WALL FOOTER AND CONCRETE PAD SHALL BE COMPACTED TO A DEPTH OF 6 INCHES AND TO A MINIMUM DRY DENSITY OF 90% IN ACCORDANCE WITH ASTM D-2922 AND D-3017, AFTER ADJUSTMENT FOR ROCK CORRECTION.
14. STANDARDS FOR SOLID WASTE VEHICLE ACCESS ARE ADDRESSED IN COM DETAIL M-62.01.
15. STANDARDS FOR SINGLE, DOUBLE, AND TRIPLE-WIDE BIN ENCLOSURES ARE ADDRESSED IN COM DETAILS M-62.02 AND M-62.03.

SEE M-62.04.1 FOR
REFERENCED NOTES

NOTES

1. BUSINESSES AND APARTMENTS THAT GENERATE A SMALL VOLUME OF REFUSE AND RECYCLABLES (TYPICALLY SMALL OFFICES, DUPLEXES, TRIPLEXES, AND FOURPLEXES) MAY REQUEST TO USE AUTOMATED BARREL SERVICE. PRIOR APPROVAL MUST BE MADE FROM THE SOLID WASTE DEPARTMENT. APPROVAL WILL BE BASED ON THE NEEDS OF THE BUSINESS OR APARTMENT AND CAPABILITY OF ROUTING THE STOP.
2. THE NUMBER OF BARRELS WILL BE DETERMINED BY:
 - BUSINESS - THE NUMBER OF OCCUPANTS AND THE SERVICES THEY PROVIDE.
 - APARTMENTS - THE NUMBER OF UNITS.
3. STORAGE AREA SCREEN WALLS ARE REQUIRED FOR BUSINESSES AND APARTMENTS THAT UTILIZE BARREL SERVICE. THE WALL SHALL BE DESIGNED TO SCREEN THE BARRELS FROM PUBLIC VIEW.
4. THE LENGTH OF THE PAD WILL DEPEND ON THE NUMBER OF BARRELS RECOMMENDED BY THE SOLID WASTE DEPARTMENT (3' FOR EACH BARREL). THE PAD SHALL BE A MINIMUM OF 3" OF CONCRETE WITHOUT A LIFT. THIS WILL ENABLE THE CUSTOMERS TO ROLL THE BARRELS WITH MINIMUM DIFFICULTY. THE DEPTH SHALL BE 44" AND THE HEIGHT A MINIMUM OF 4'.
5. COLLECTION OF BARRELS WILL FOLLOW THE CURRENT RESIDENTIAL COLLECTION ORDINANCE.



STORAGE AREA SCREEN WALLS FOR BARREL SERVICE

NOT TO SCALE

THE CITY OF MESA RESIDENTIAL SOLID WASTE GUIDELINES

SMALL LOT/MULTI-LOT WITH PRIVATE DRIVE BARREL COLLECTION

THE COURTYARD OR CLUSTER TYPE HOME DESIGN THAT DOES NOT ALLOW FOR CURBSIDE PICKUP (IN FRONT OF CUSTOMERS HOME) OF THE SOLID WASTE AND RECYCLABLE BARRELS SHOULD BE MINIMIZED AND MEET THE FOLLOWING CRITERIA:

1. EACH UNIT MUST HAVE A PREDETERMINED LOCATION FOR A MINIMUM OF 2 BARRELS PER UNIT WHERE STREET PARKING IS PROHIBITED FROM 6 AM TO 6 PM ON COLLECTION DAYS. BARRELS SHALL HAVE A DESIGNATED LOCATION ON THE STREET WITH A PERMANENT MARKING ON THE CURBING IDENTIFYING ADDRESS OR UNIT NUMBER. SHOW ALL BARREL LOCATIONS, WITH ADDRESSES, ON SITE PLAN. FOR VISIBILITY TRIANGLE, REFER TO 2012, OR LATEST VERSION OF ENGINEERING AND DESIGN STANDARDS.
2. BARREL MUST BE PHYSICALLY LOCATED IN SUCH A WAY THAT THE DISTANCE TO THE PARCEL IS A MAXIMUM OF 100 FEET. THE LOCATION IS SO CONVENIENT/LOGICALLY PLACED THAT RESIDENT(S) WOULD INSTINCTIVELY KNOW THEIR PLACEMENT LOCATION (ONE WOULD NOT PASS BY ONE OR MORE LOCATIONS TO SET THE BARREL AT THE DESIGNATED LOCATION).
3. ADDITIONALLY, PLACEMENT DESIGNATIONS WILL NOT BE LOCATED NEAR CLUSTER MAILBOX LOCATIONS OR; TO CAUSE A CLUSTER OR CLOSE GROUPING OF BARRELS. BARRELS SHOULD HAVE A MINIMUM 52" SPACING, CENTER TO CENTER OF BARREL. THIS WILL ALLOW FOR 18" SPACING BETWEEN BARRELS ON EACH SIDE. THIS WILL ALLOW FOR BETTER IDENTIFICATION OF BARREL OWNERSHIP AND ACCOUNTABILITY ON THE RESIDENT TO RETRIEVE THE BARRELS IN A TIMELY MANNER.
4. FOR STREETS DESIGNATED FOR CURBSIDE BARREL COLLECTION, TREE PLANTING SHOULD NOT TAKE PLACE WITHIN TEN (10) FEET OF THE CURB AND SHOULD BE SPACED SO AS NOT TO CREATE AN AERIAL OBSTRUCTION FOR THE BARREL DUMPING AT THE FINAL FULL GROWTH DIMENSIONS.
5. THE REQUIRED USE OF IDENTIFIED LOCATIONS (ADDRESSES STAMPED INTO THE CONCRETE) FOR INDIVIDUAL 90-GALLON CONTAINERS MUST BE INCLUDED IN THE HOMEOWNER'S CONDITIONS, COVENANTS, AND RESTRICTIONS (CC&R'S). BARRELS WILL NEED TO BE SET OUT FOR COLLECTION BY 6:00 A.M. AND REMOVED NO LATER THAN 6:00 P.M. ON THE DAY OF COLLECTION.
6. GARAGE OR STORAGE AREAS MUST HAVE ROOM TO ACCOMMODATE ONE 90-GALLON REFUSE CONTAINER, ONE 90-GALLON RECYCLING CONTAINER, AND ONE 90-GALLON GREEN WASTE CONTAINER.
7. GATES OR DOOR OPENING MUST ALLOW FOR CONTAINER PASSAGE OF APPROXIMATELY 33 INCHES IN WIDTH.

SUBDIVISION REQUIREMENTS FOR AUTOMATED BARREL COLLECTION

TO ENSURE THAT THE SOLID WASTE DEPARTMENT PROVIDES SAFE AND EFFICIENT RESIDENTIAL SOLID WASTE SERVICES TO OUR CUSTOMERS, THE FOLLOWING LIST HAS BEEN DEVELOPED WITH REGARD TO ALL PLANS/ZONING CHANGES:

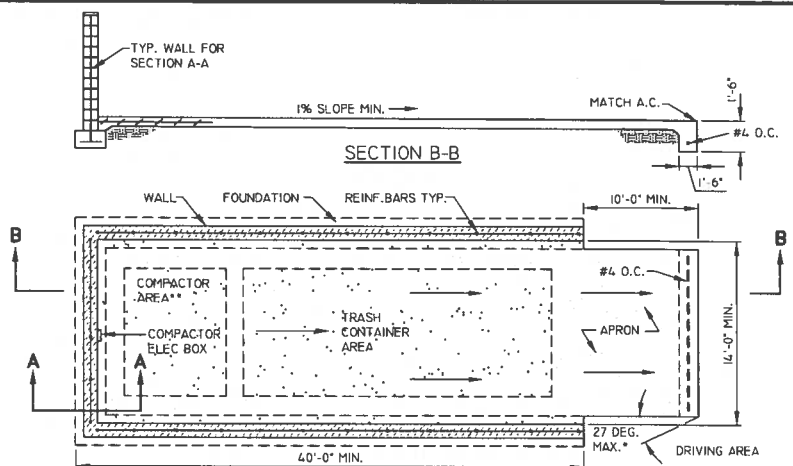
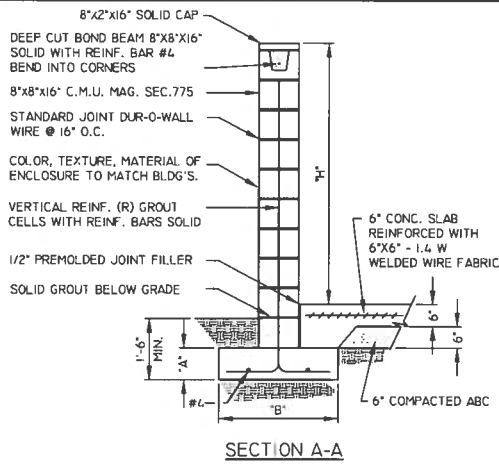
1. GARAGE OR STORAGE AREAS MUST HAVE ROOM TO ACCOMMODATE ONE 90-GALLON REFUSE CONTAINER, ONE 90-GALLON RECYCLING CONTAINER, AND ONE 90-GALLON GREEN WASTE CONTAINER.
2. GATES OR DOOR OPENING MUST ALLOW FOR CONTAINER PASSAGE OF APPROXIMATELY 33 INCHES IN WIDTH.
3. PRIVATE STREETS MUST HAVE AN AREA FOR COLLECTION WITHOUT OBSTRUCTION.
4. PRIVATE STREETS MUST BE DESIGNED TO WITHSTAND THE WEIGHT OF 37 CUBIC YARD COLLECTION VEHICLES (APPROX. 29 TONS).
5. ALL STREETS MUST BE DESIGNED SO THAT COLLECTION VEHICLES ARE NOT FORCED TO BACK UP AT ANY TIME (HAMMERHEAD DRIVES AND DEAD-ENDS ARE UNACCEPTABLE).
6. PRIVATE STREETS WITH CUL-DE-SACS MUST BE DESIGNED TO MEET CITY OF MESA STANDARDS FOR CUL-DE-SAC TURNING RADIUS.
7. THE REQUIRED USE OF IDENTIFIED LOCATIONS (ADDRESSES STAMPED INTO THE CONCRETE) FOR INDIVIDUAL 90-GALLON CONTAINERS MUST BE INCLUDED IN THE HOMEOWNER'S CONDITIONS, COVENANTS, AND RESTRICTIONS (CC&R'S). BARRELS WILL NEED TO BE SET OUT FOR COLLECTION BY 6:00 A.M. AND REMOVED NO LATER THAN 6:00 P.M. ON THE DAY OF COLLECTION.
8. DEVELOPERS OF GATED SUBDIVISIONS MUST SUPPLY SOLID WASTE COLLECTION SERVICES WITH A GATE CODE AT THE TIME OF INSTALLATION. ALL GATES MUST OPEN FROM THE CODE PROVIDED, WITH THE EXCEPTION OF EXIT ONLY GATES. EXIT ONLY GATES WILL BE WIRED FOR AUTOMATIC OPENING. ALL GATES MUST REMAIN OPEN FOR A MINIMUM 30 SECONDS ONCE ACTIVATED, OR UNTIL COLLECTION VEHICLE SAFELY PASSES THROUGH GATE PATH.
9. FOR STREETS DESIGNATED FOR CURBSIDE BARREL COLLECTION, TREE PLANTING SHOULD NOT TAKE PLACE WITHIN TEN (10) FEET OF THE CURB AND SHOULD BE SPACED SO AS NOT TO CREATE AN AERIAL OBSTRUCTION FOR THE BARREL DUMPING AT THE FINAL FULL GROWTH DIMENSIONS.
10. STREETLIGHTS WILL NEED TO BE DESIGNATED TO ACCOMMODATE THE HEIGHT OF THE SOLID WASTE COLLECTION VEHICLE.
11. MINIMUM 14' OVERHEAD CLEARANCE IS NEEDED FOR COLLECTION VEHICLE TO SAFELY NEGOTIATE.
12. BARREL PAD LOCATIONS SHALL BE NO MORE THAN 75' FROM UNIT UTILIZING THE PAD.



RESIDENTIAL SOLID WASTE GUIDELINES

DETAIL NO.
M-62.06

REV. 01/31/14



SECTION A-A

LARGE COMPACTOR REFUSE AREA

TABLE #1

"H"	"A"	"B"	"R"
6'-0"	12"	24"	#4 @ 48"
7'-0"	12"	24"	#5 @ 48"
8'-0"	12"	24"	#5 @ 48"
9'-0"	12"	28"	#6 @ 48"
10'-0"	12"	30"	#6 @ 48"

NOTES:

- CONSTRUCT ENCLOSURE PER COM DETAIL M-62.04.
- ALL INTERIOR PAD DIMENSIONS ARE MINIMUMS.
- WALL HEIGHT DETERMINED BY COMPACTOR HEIGHT (6'-0" MIN.).
- FINAL LOCATION AND ORIENTATION TO BE DETERMINED BY THE CITY.
- PROVIDE PEDESTRIAN ACCESS TO THIS AREA (THRU WALL)
- CONCRETE $f'_c = 3,000$ PSI
 REINFORCING $f_y = 60,000$ PSI
 $f_s = 24,000$ PSI
 MASONRY $f_m = 1,500$ PSI
- SAFETY POSTS, WHEEL STOPS, & GUIDE RAILS SECURED TO CONCRETE SLAB, ARE REQUIRED FOR ALL ENCLOSURES. SAFETY POSTS ARE ADDRESSED IN COM DETAIL M-62.04.
- PROPER CLEANING METHODS ARE TO BE USED TO PREVENT THE DISCHARGE OF WASH WATER INTO PUBLIC STORM DRAIN SYSTEM. PLEASE CONTACT THE CITY OF MESA AT (480) 644-3599 FOR A LIST OF BEST MANAGEMENT PRACTICES THAT WILL HELP YOUR FACILITY COMPLY WITH ENVIRONMENTAL REGULATIONS.
- ANY DOORS PROVIDED (NOT SHOWN ON THIS DETAIL) SHALL BE SELF-CLOSING AND SELF-LATCHING.
- GATES (NOT SHOWN ON THIS DETAIL) SHALL BE PROVIDED FOR SCREENING PURPOSES ACROSS THE FRONT OF THE ENCLOSURE. STANDARDS FOR GATES ARE ADDRESSED IN COM DETAIL M-62.04.
- GATES, HINGES, AND MOUNTING HARDWARE SHALL NOT INTRUDE UPON MINIMUM NET ENCLOSURE OPENING.
- ENCLOSURES SHALL HAVE A MINIMUM OPENING OF 14'.
- REFER TO COM DETAIL M-62.01 FOR CLEARANCE REQUIREMENTS.

NOT TO SCALE